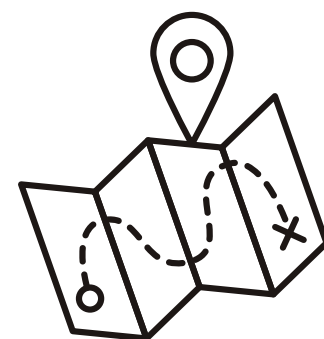




**9 NIGHTS /
10 DAYS**

KEDARNATH BADRINATH



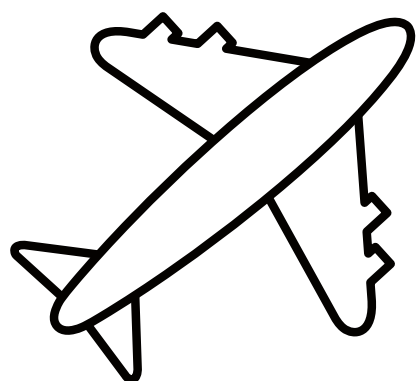
HARIDWAR - KEDARNATH - BADRINATH - RISHIKESH



ABOUT US

**ESTABLISHED IN 2022 , WE ARE A PREMIER TRAVEL COMPANY
SPECIALIZING IN INDIAN TRIPS OUR AIM IS TO PROVIDE
UNFORGETTABLE AND ENRICHING TRAVEL EXPERIENCES TO
OUR VALUED CUSTOMERS.**





TOUR PACKAGES



18,500/-pp
SLEEPER TRAIN

20,500/-pp
A/C TRAIN



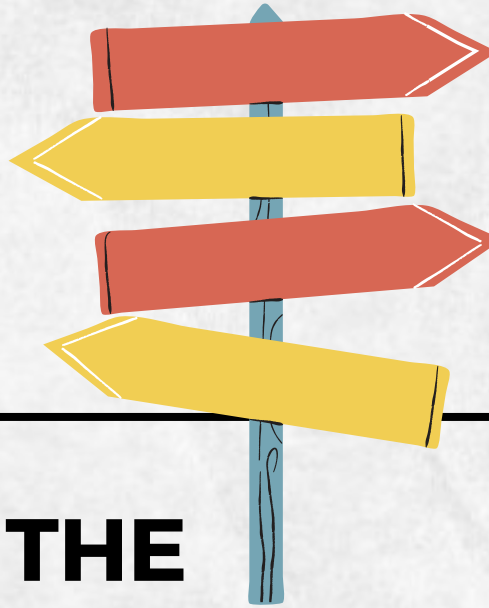
NOTE: ROOMS ON QUAD SHARING BASIS.

TRAVEL **ITINERARY**



DAY- 1	BOARD TRAIN FROM MUMBAI - DELHI / HAZRAT NIZAMUDDIN .
DAY-2	<p>REACH STATION AND PROCEED TOWARDS HARIDWAR, CHECK- IN INTO THE HOTEL ROOMS.IN THE EVENING VISIT HAR KI PAURI ,ATTEND GANGA AARTI. OVERNIGHT STAY AT HARIDWAR.</p> <p><u>MEAL: BREAKFAST, DINNER</u></p>
DAY-3	<p>AFTER HAVING BREAKFAST WE WILL PROCEED TOWARDS PHATA, ON THE WAY SIGHTSEEINGS. (DEVPRAYAG,DHARI DEVI,RUDRAPRAYAG)</p> <p><u>MEAL: BREAKFAST, DINNER</u></p> 

TRAVEL ITINERARY



DAY-4	<p>START OUR TREK TOWARDS KEDARNATH FROM GAURIKUND THE BASE VILLAGE OF KEDARNATH. ATTEND EVENING AARTI.</p> <p><u>MEAL: BREAKFAST, DINNER</u></p>
DAY-5	<p>EARLY IN THE MORNING WE WILL TAKE DARSHAN AND DO SOME LOCAL SIGHTSEEINGS ACROSS THE TEMPLE. (BHAIRAVNATH TEMPLE ADISHANKARACHARYA) TREKDOWNWARDS TOWARDS HOTEL.</p> <p><u>MEAL: BREAKFAST, DINNER</u></p>
DAY-6	<p>AFTER HAVING WARM BREAKFAST WE WILL PROCEED TOWARDS JOSHIMATH. OVERNIGHT STAY AT HOTEL.</p> <p><u>MEAL: BREAKFAST, DINNER</u></p>

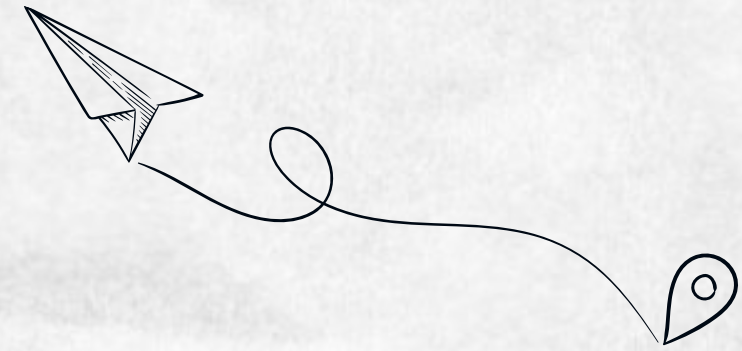
TRAVEL ITINERARY



DAY-7	<p>WILL LEAVE FOR BADRINATH TEMPLE, AND LOCAL SIGHTSEEINGS ACROSS BADRINATH TEMPLE (MANA VILLAGE, SARASWATI RIVER) OVERNIGHT STAY AT JOSHIMATH.</p> <p><u>MEAL: BREAKFAST, DINNER</u></p>
DAY-8	<p>WAKE UP IN THE MORNING AND PROCEED BACK TOWARDS RISHIKESH WE WILL ATTEND GANGA AARTI AT TRIVENI GHAT .OVERNIGHT STAY AT RISHIKESH.</p> <p><u>MEAL: BREAKFAST, DINNER</u></p>
DAY-9	<p>AFTER HAVING BREAKFAST WE WILL DO LOCAL SIGHTSEEINGS OF RISHIKESH AND WILL PROCEED TO CATCH OUR TRAIN .</p> <p><u>MEAL: BREAKFAST</u></p>

INCLUSIONS

**MUMBAI TO MUMBAI TRAIN TICKETS.
TRANSPORTATION FOR SIGHTSEEING.
HOTELS MEALS (AS PER MENTIONED IN THE ITINERARY).
TOLL, TAX, PERMIT,PARKING CHARGES.
TOUR GUIDE,FIRST AID
DJ NIGHT, RIVER RAFTING.**



EXCLUSION

AIR FARE,HORSE,PONY.

EXTERNAL GUIDE CHARGES.

ANY PERSONAL EXPENSES.

**VEHICLE CHARGES, WHERE COMPANY VEHICLE ARE NOT
AVAILABLE OR INCLUDED IN TOUR COST.**



CANCELLATION TERMS

Registration Amount : Non Refundable and Non Transferable

- **60 Days or more prior to the start date 40% cancellation charges.**
- **30 Days or more prior to the start date 70% cancellation charges.**
- **07 Days or more prior to the start date 100% cancellation charges.**
- **No Show : No Refund**

Hotel check-in & Checkout timings as per hotel rules and regulations only

Travellers are needed to follow the time as per to cover all the sightseeing mentioned in the itinerary.

Organisers reserves full right to claim any additional expenses due to delay / breakdown of buses / rail / strikes / wars / riots / natural calamities.

Due to government orders if any of the places mentioned in the itinerary are closed our tour agency is not responsible for cancellation of those sightseeings.

Train details will be given to you once you confirm dates .



ATTRACTION POINTS



MANA'S LAST TEA SHOP



SARASWATI RIVER

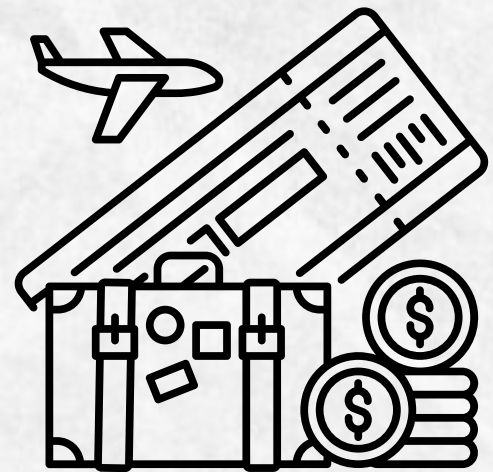


BHAIRAVNATH TEMPLE



OUR GROUPS





THANK YOU

