

travel
takers.

CHAR DHAM YATRA

13 NIGHTS \

14 DAYS



HARIDWAR - YAMONUTRI - GANGOTRI - KEDARNATH - BADRINATH - RISHIKESH



@travel_takers_



8291524436



ABOUT US



**ESTABLISHED IN 2022 , WE ARE A PREMIER
TRAVEL COMPANY SPECIALIZING IN INDIAN
TRIPS OUR AIM IS TO PROVIDE
UNFORGETTABLE AND ENRICHING TRAVEL
EXPERIENCES TO OUR VALUED CUSTOMERS.**



TOUR PACKAGES



SLEEPER TRAIN
24,000/- pp

A/C TRAIN
26,000/- pp

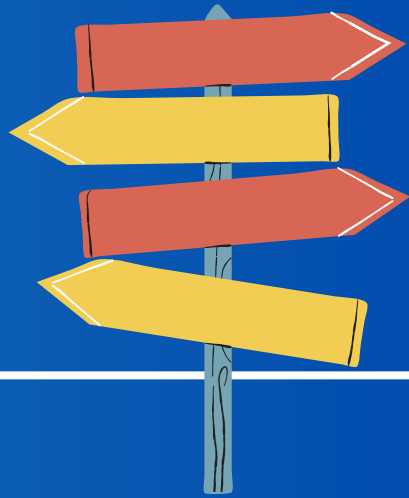


NOTE : ROOMS ON QUAD SHARING BASIS.





TRAVEL ITINERARY



DAY 1	BOARD TRAIN FROM MUMBAI - HARIDWAR / HAZRAT NIZAMUDDIN.
DAY 2	REACH HARIDWAR AND REST INTO OUR HOTELS. IN THE EVENING LOCAL SIGHTSEEINGS NEAR HARIDWAR. (GANGA AARTI, MARKET)
DAY 3	AFTER HAVING BREAKFAST WE WILL LEAVE FOR BARKOT AND CHECK INTO OUR ROOMS. OVERNIGHT STAY AT BARKOT.
DAY 4	EARLY MORNING WE WILL PROCEED TOWARDS JANKI CHATTI AND START OUR TREK UPWARDS, AFTER HAVING DARSHAN AND SPENDING TIME WITH OUR FRIENDS WE WILL TREKBACKWARDS TO OUR HOTEL ROOMS.



TRAVEL ITINERARY



DAY 5	LATE MORNING AFTER BREAKFAST WE WILL PROCEED TOWARDS UTTARKASHI AND CHECK INTO OUR ROOMS . NIGHT STAY AT HOTEL.
DAY 6	EARLY MORNING WE WILL PROCEED TOWARDS GANGOTRI TEMPLE AND VISIT SOME LOCAL SIGHTSEEINGS AROUND THE TEMPLE, AND HEAD BACK TO OUR HOTEL.
DAY 7	EARLY MORNING WE WILL LEAVE FOR GUPTKASHI. (ON THE WAY SIGHTSEEINGS) OVERNIGHT STAY AT GUPTKASHI.
DAY 8	EARLY MORNING WE WILL PROCEED TO START OUR TREK TOWARDS KEDARNATH, IN THE EVENING WE WILL ATTEND GANGA AARTI AT KEDARNATH DHAM. OVERNIGHT STAY AT KEDARNATH.



TRAVEL ITINERARY



DAY 9	EARLY MORNING WE WILL TAKE DARSHAN AND DO SOME LOCAL SIGHTSEEINGS ,LATER TREK DOWNWARDS TO OUR HOTEL ROOMS.
DAY 10	AFTER BREAKFAST WE WILL HEAD TOWARDS JOSHIMATH AND REST INTO OUR HOTEL ROOMS.
DAY 11	EARLY MORNING WE WILL PROCEED TOWARDS BADRINATH TEMPLE FOR OUR LAST DHAM OF THE TRIP. OVERNIGHT STAY AT JOSHIMATH.
DAY 12	EARLY MORNING WE WILL DEPART FOR RISHIKESH, EVENING ARRIVE AT RISHIKESH AND REST INTO OUR ROOMS.
DAY 13	LATE MORNING WILL HAVE RISHIKESH SIGHTSEEINGS AND IN THE NIGHT WE WILL PROCEED TO CATCH OUR TRAIN TOWARDS MUMBAI.

INCLUSIVE



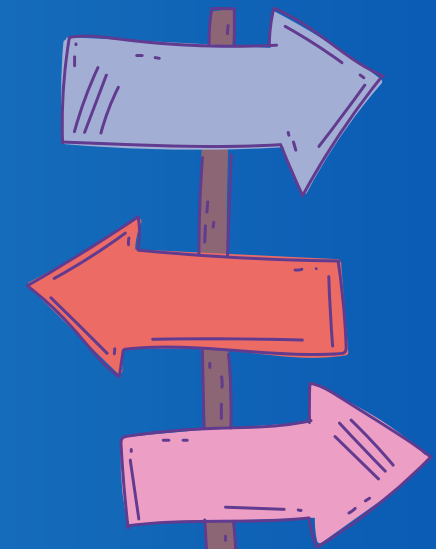
MUMBAI TO MUMBAI TRAIN TICKETS.

TRANSPORTATION FOR SIGHTSEEINGS.

HOTEL MEALS (BREAKFAST , DINNER) “EXCEPT TRAIN”.

TOLL, TAX, PERMIT CHARGES, YATRA PASSES, PARKING CHARGES.

TOUR GUIDE, DJ NIGHT, FIRST AID.



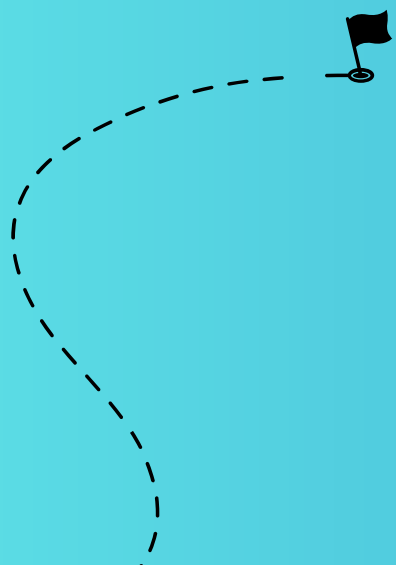
EXCLUSIVE

AIR FARE, HORSE, PONY.

EXTERNAL GUIDE CHARGES.

ANY PERSONAL EXPENSES.

**VEHICLE CHARGES, WHERE COMPANY VEHICLE ARE
NOT AVAILABLE OR INCLUDED IN TOUR COST.**



CANCELLATION TERMS

REGISTRATION AMOUNT : NON REFUNDABLE AND NON TRANSFERABLE

- **60 DAYS OR MORE PRIOR TO THE START DATE 40% CANCELLATION CHARGES.**
- **30 DAYS OR MORE PRIOR TO THE START DATE 70% CANCELLATION CHARGES.**
- **07 DAYS OR MORE PRIOR TO THE START DATE 100% CANCELLATION CHARGES.**
- **NO SHOW : NO REFUND**

HOTEL CHECK-IN & CHECKOUT TIMINGS AS PER HOTEL RULES AND REGULATIONS ONLY

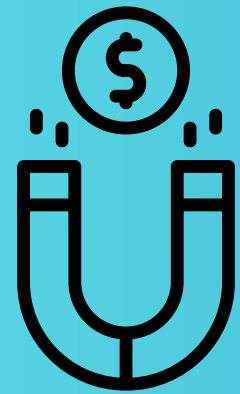
TRAVELLERS ARE NEEDED TO FOLLOW THE TIME AS PER TO COVER ALL THE SIGHTSEEING MENTIONED IN THE ITINERARY.

ORGANISERS RESERVES FULL RIGHT TO CLAIM ANY ADDITIONAL EXPENSES DUE TO DELAY / BREAKDOWN OF BUSES / RAIL / STRIKES / WARS / RIOTS / NATURAL CALAMITIES.

DUE TO GOVERNMENT ORDERS IF ANY OF THE PLACES MENTIONED IN THE ITINERARY ARE CLOSED OUR TOUR AGENCY IS NOT RESPONSIBLE FOR CANCELLATION OF THOSE SIGHTSEEINGS.

TRAIN DETAILS WILL BE GIVEN TO YOU ONCE YOU CONFIRM DATES .

**NOTE: FULL PAYMENT OF THE TRIP COST HAS TO BE PAID BEFORE THE TRIP.
TRANSFER OF YOUR BOOKING TO OTHER IS STRICTLY PROHIBITED.**



ATTRACTION POINTS



MANAS LAST TEA SPOT

BHAIRAVNATH TEMPLE

HAR KI PAURI



THANK YOU